



■ **NERO-BLACK** 00 **NOIR-NEGRO** 01 ■ **ERGAL** 02 ■ **BLU-BLUE** 03 ■ **ORO-GOLD** 04 ■ **ROSSO-RED** 04 ■ **GRIGIO-GREY** 13 **GRIS-GRIS**

T=Trasparente/Transparent/Transparente/Transparente - F=Fumè/Smoke/Fumè/



PEK71
T 1



PEK74
T 1.5



PEK72
T 2



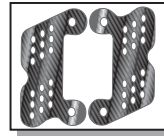
PEK75
T 2.5



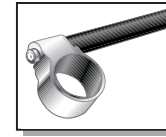
PEK73
T 3



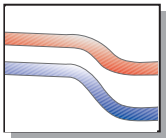
PEK76
T 3.5



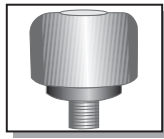
PAK08



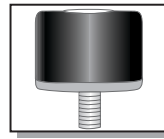
SM
Ø 51mm



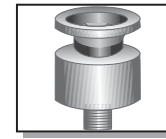
MN
naked
roadster



ST23



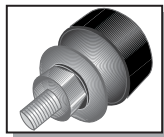
PZM23



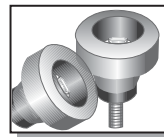
SC08



SC11
special



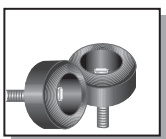
PFC



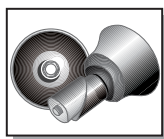
PT52



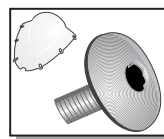
PTS52



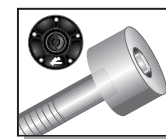
PTSP52
piccolo
small
petit
pequeño



CPAK02
Anteriore / Front
Arrière / Anterior
CPPK02
Posteriore / Rear
Arrière / Posterior



VEV01K
6 pcs



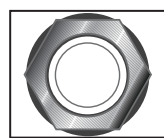
VET04K
5 pcs



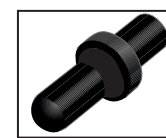
TS01K02



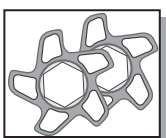
TS02K02



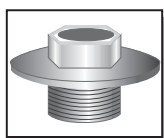
DC01



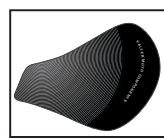
ADCA04



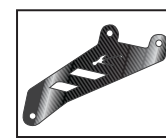
GRF



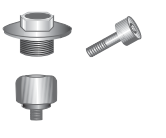
TOC01K



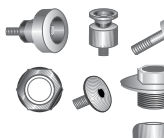
SN



RM01K04



KM02K13



KM03K13



KM04



PRTNK08



PSF



Tutti i prodotti VALTER MOTO COMPONENTS sono progettati e realizzati esclusivamente per uso agonistico e in circuito chiuso. Il loro utilizzo su strade aperte al pubblico è vietato. Il montaggio dei nostri prodotti deve essere effettuato da officine motociclistiche specializzate.

All VALTER MOTO COMPONENTS parts are intended for exclusive racing use on tracks. Their use on public highways and roads may be forbidden. Only specialized motorcycle workshops can fix our products.

Toutes les pièces Valter motos Components sont réservées à un usage racing sur piste. Leur utilisation sur route ouverte est interdite. Seuls les magasins spécialisés sont habilités à monter nos produits.

Todos los productos VALTER MOTO COMPONENTS estan diseñados y realizados para uso exclusivo en circuito, la utilización de estos productos en carretera está prohibido. El montaje de nuestros productos debe ser realizado en talleres especializados.