



■ NERO-BLACK 00 NOIR-NEGRO 01 ■ ERGAL 02 ■ BLU-BLUE 03 ■ ORO-GOLD 04 ■ ROSSO-RED 05 ■ GRIGIO-GREY 13 GRIS-GRIS

T=Trasparente/Transparent/Transparente/Transparente - F=Fumè/Smoke/Fumè/



PEK40
T 1



PEK43
T 1.5



PEK41
T 2



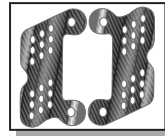
PEK44
T 2.5



PEK42
T 3



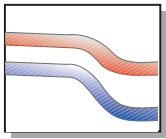
PEK45
T 3.5



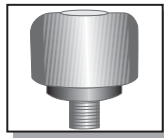
PPAK08



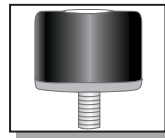
SM
Ø 50mm



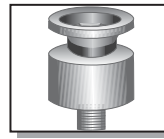
MN
naked
roadster



ST04



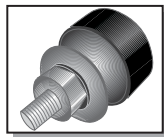
PZM04



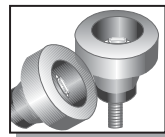
SC04



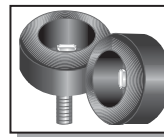
SC11
special



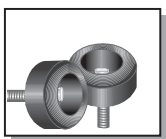
PFC



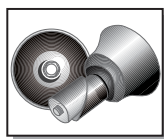
PT



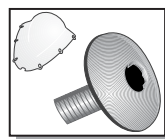
PTS23



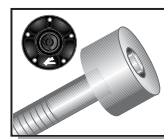
PTSP23
piccolo
small
petit
pequeño



CPAK02
Anteriore / Front
Arrière / Anterior
CPPK02
Posteriore / Rear
Arrière / Posterior



VEV01K
6 pcs



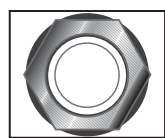
VET04K
5 pcs



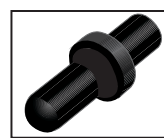
TS01K01



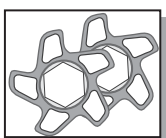
TS02K01



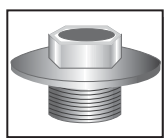
DC01



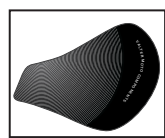
ADCA04



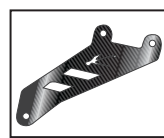
GRF04



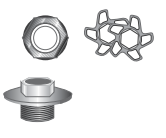
TOC01K



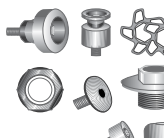
SNK04



RM



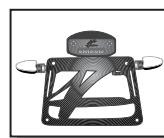
KM02K04



KM03K05



KM04



PRTNK03



PSF



Tutti i prodotti VALTER MOTO COMPONENTS sono progettati e realizzati esclusivamente per uso agonistico e in circuito chiuso. Il loro utilizzo su strade aperte al pubblico è vietato. Il montaggio dei nostri prodotti deve essere effettuato da officine motociclistiche specializzate.

All VALTER MOTO COMPONENTS parts are intended for exclusive racing use on tracks. Their use on public highways and roads may be forbidden. Only specialized motorcycle workshops can fix our products.

Toutes les pièces Valter motos Components sont réservées à un usage racing sur piste. Leur utilisation sur route ouverte est interdite. Seuls les magasins spécialisés sont habilités à monter nos produits.

Todos los productos VALTER MOTO COMPONENTS estan diseñados y realizados para uso exclusivo en circuito, la utilización de estos productos en carretera está prohibido. El montaje de nuestros productos debe ser realizado en talleres especializados.